

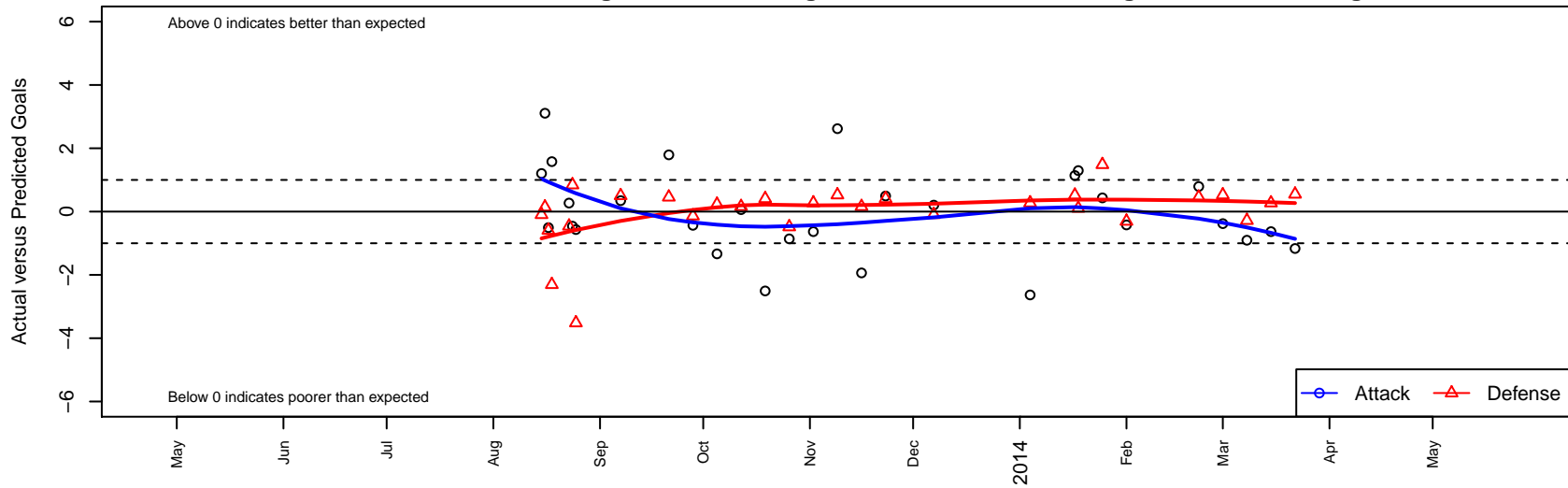
# Granite Falls YSC G99

Granite Falls Youth SC  
 Granite Falls, WA  
 G99 total strength=878  
 attack=0.96 defense=1.78  
 fall league = NPSL G14D3, NPSL Spr G14D2  
 alt names used:  
 GFYSC  
 GFYSC G99  
 GFYSC G99 ()  
 GFYSC - G99

Venues played:  
 Bigfoot Silver U14  
 Xtreme Cup GU14  
 NPSL G14D3  
 Founders Cup G99  
 NPSL Spr G14D2



**Granite Falls YSC G99**  
 Dots are actual minus expected GF (blue circles) and GA (red triangles).  
 Blue line is smoothed change in attack strength. Red is smoothed change in defense strength.



	<b>date</b>	<b>home</b>		<b>away</b>		<b>venue</b>	<b>pred.home</b>	<b>pred.away</b>
16396	2014-03-22	Firecrackers G99	0	Granite Falls YSC G99	1	NPSL Spr G14D2	0.55	2.17
16307	2014-03-15	Granite Falls YSC G99	4	Mukilteo Rush G99	0	NPSL Spr G14D2	4.63	0.27
16191	2014-03-08	Granite Falls YSC G99	0	Seattle United NE White G99	1	NPSL Spr G14D2	0.90	0.72
16084	2014-03-01	Whatcom FC Rangers Black G99	0	Granite Falls YSC G99	1	NPSL Spr G14D2	0.53	1.38
16010	2014-02-22	BIFC Blue G99	0	Granite Falls YSC G99	3	NPSL Spr G14D2	0.46	2.21
15884	2014-02-01	Seattle United NE Blue G99	2	Granite Falls YSC G99	0	Founders Cup G99	1.69	0.42
15862	2014-01-25	Granite Falls YSC G99	1	Seattle United W Blue G99	0	Founders Cup G99	0.57	1.48
15785	2014-01-18	Granite Falls YSC G99	2	TC United G99	1	Founders Cup G99	0.70	1.10
15763	2014-01-17	Seattle United Shoreline White G99	0	Granite Falls YSC G99	3	Founders Cup G99	0.52	1.86
15735	2014-01-04	Mukilteo Rush G99	0	Granite Falls YSC G99	2	Founders Cup G99	0.27	4.63
15716	2013-12-07	Granite Falls YSC G99	1	Kent United White G99	1	NPSL G14D3	0.80	0.90
15529	2013-11-23	Snohomish United Red G99	0	Granite Falls YSC G99	3	NPSL G14D3	0.41	2.51
15407	2013-11-16	Storm King G99	0	Granite Falls YSC G99	1	NPSL G14D3	0.16	2.94
15267	2013-11-09	Granite Falls YSC G99	4	Whatcom FC Rangers Black G99	0	NPSL G14D3	1.38	0.53
15076	2013-11-02	Mukilteo Rush G99	0	Granite Falls YSC G99	4	NPSL G14D3	0.27	4.63
14875	2013-10-26	Seattle United Shoreline White G99	1	Granite Falls YSC G99	1	NPSL G14D3	0.52	1.86
14692	2013-10-19	Granite Falls YSC G99	0	Snohomish United Red G99	0	NPSL G14D3	2.51	0.41
14478	2013-10-12	Granite Falls YSC G99	3	Storm King G99	0	NPSL G14D3	2.94	0.16
14272	2013-10-05	Seattle United NE Black G99	0	Granite Falls YSC G99	1	NPSL G14D3	0.23	2.34
14049	2013-09-28	Granite Falls YSC G99	1	SCORE Patriots G99	1	NPSL G14D3	1.43	0.86
13817	2013-09-21	Granite Falls YSC G99	4	BIFC Blue G99	0	NPSL G14D3	2.21	0.46
13390	2013-09-07	MIFC Flames G99	0	Granite Falls YSC G99	3	NPSL G14D3	0.50	2.65
13235	2013-08-25	Seattle United W Blue G99	5	Granite Falls YSC G99	0	Xtreme Cup GU14	1.48	0.57
13199	2013-08-24	Granite Falls YSC G99	0	Kent United Green G99	1	Xtreme Cup GU14	0.46	1.84
13165	2013-08-23	CSC Velocity Green G99	1	Granite Falls YSC G99	2	Xtreme Cup GU14	0.54	1.73
13115	2013-08-18	Seattle United NE Blue G99	4	Granite Falls YSC G99	2	Bigfoot Silver U14	1.69	0.42
13031	2013-08-17	Snohomish United Red G99	1	Granite Falls YSC G99	2	Bigfoot Silver U14	0.41	2.51
12986	2013-08-16	MVP Marauders White G99	0	Granite Falls YSC G99	6	Bigfoot Silver U14	0.14	2.89

	<b>date</b>	<b>home</b>		<b>away</b>		<b>venue</b>	<b>pred.home</b>	<b>pred.away</b>
12972	2013-08-15	Kent United White G99	1	Granite Falls YSC G99	2	Bigfoot Silver U14	0.90	0.80